



Herb Green Health
禾 绿 康 健

Ginkgo Biloba Extract(GBE)

Every 1KG of GBE powder is extracted from 50KG of ginkgo dried leaves



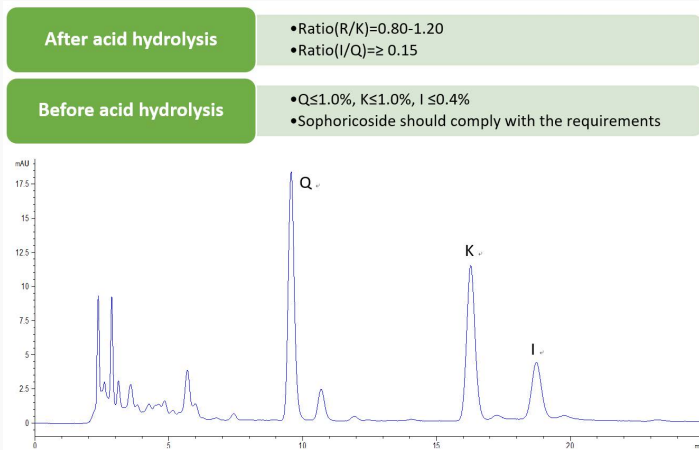
Introduction

According to USP, Powdered Ginkgo Extract is prepared from dried and comminuted leaves of Ginkgo extracted by suitable solvents. The ratio of the crude plant material to Powdered Extract is between 35:1 and 67:1. It contains NLT 22.0% and NMT 27.0% of flavonoids, calculated as flavonol glycosides, on the dried basis. It contains NLT 5.4% and NMT 12.0% of terpene lactones, consisting of between 2.6% and 5.8% of bilobalide and between 2.8% and 6.2% of the sum of ginkgolide A, ginkgolide B, and ginkgolide C, on the dried basis.

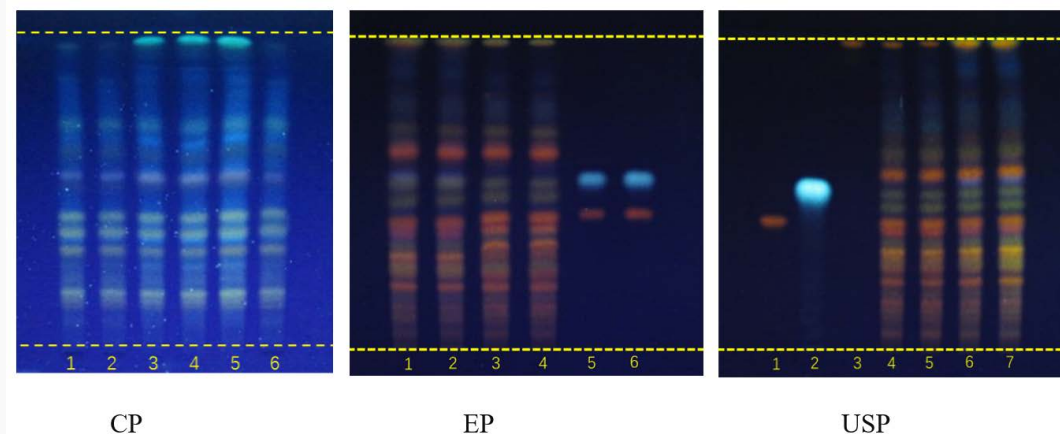
Identification

1. Identification method of Pharmacopoeia

(1) The HPLC Identification



(2) The TLC Identification

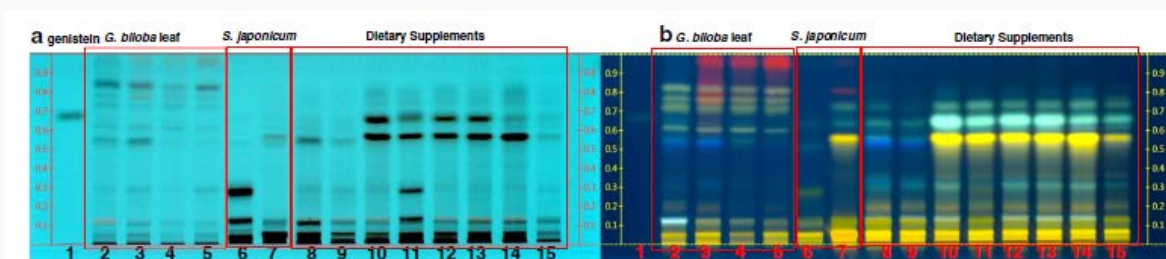


2. Other auxiliary Identification method

(1) The content of Rutin

Not more than 4.0%

(2) ID Identification



(3) The content of Genistein after acid hydrolysis and Fingerprint identification method, etc.



Ginkgo Biloba Extract



Ginkgo Biloba Extract

Conventional spec.: 24/6, <5ppm

Reference: USP43, EP10.0, CP2020,

Character: Yellow-brown to tan powder

Package: 25KG/Drum

Certification: ISO22000, ISO9001, Kosher

Function of GBE

Platelet aggregation factor

- Treatment of asthma, lung allergies, heart failure, etc.

Vascular dynamics factor

- Prevention and treatment of cardiovascular disease effectively.

Effective drugs for nervous system diseases

- Against Alzheimer's disease.

Free radical scavenger

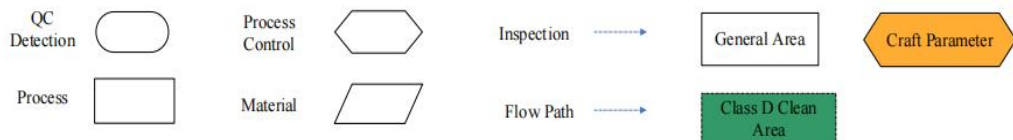
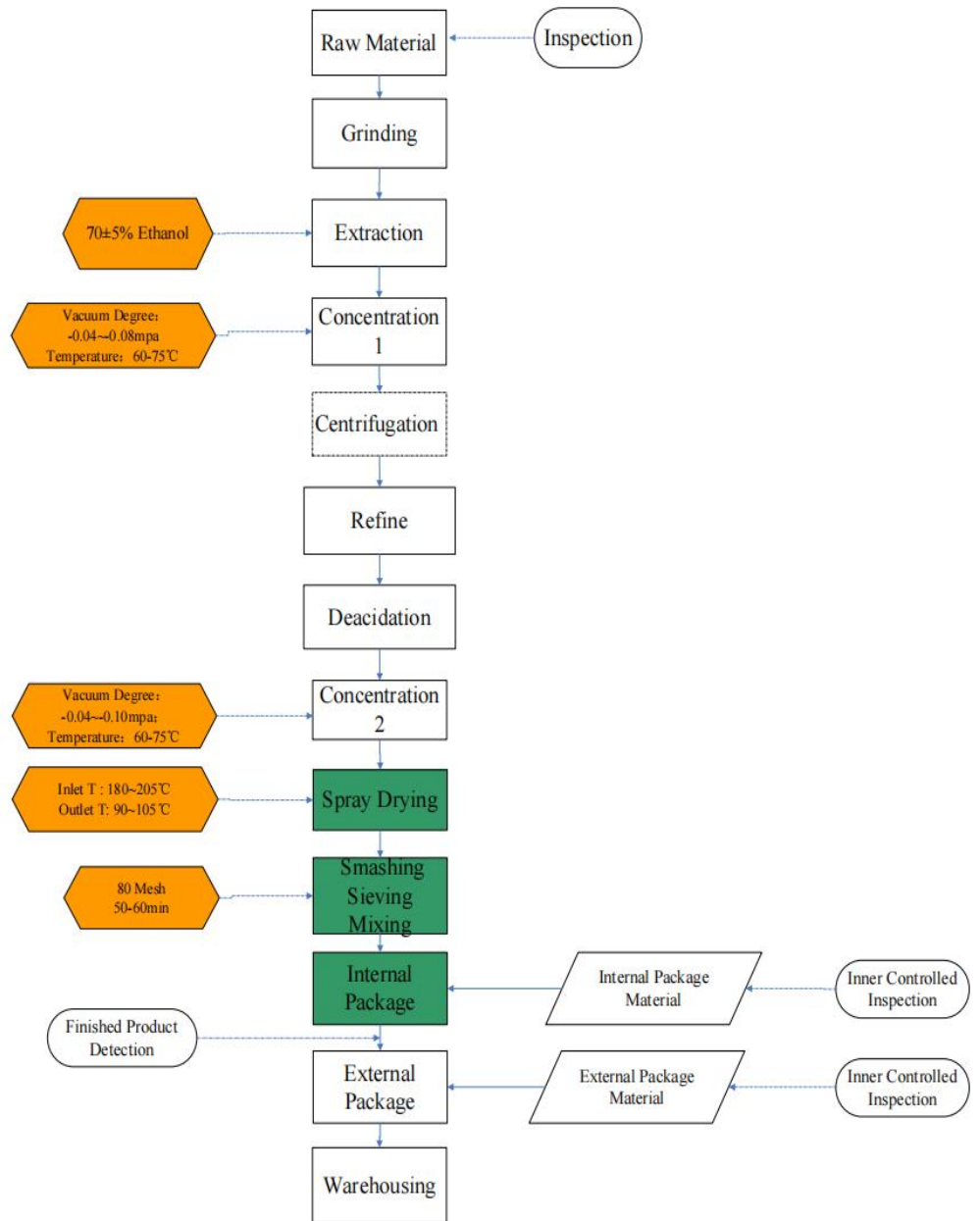
- Anti-aging, anti-cancer, etc.

Dosage and form

GBE is available in capsule form, as tablets, and liquid extracts.

In studies, adults have used between **120 and 240 mg** a day in divided doses.

It appears to take **4 to 6 weeks** before improvements are noticed.



Certificate of Analysis

Product Name	Ginkgo Biloba Extract	Batch Quantity	100 kg
Batch Number	20211205	Manufacture Date	2021-12-26
Latin Name	<i>Ginkgo Biloba</i> L.	Shelf Life	2 years
Botanical Part Used	Leaf	Sampling Date	2021-12-26
Country of Origin	China	Report Date	2022-01-19
Extract Solvent	Ethanol & Water	Extract Ratio	50:1
Standard Code	TS3-C110201-27-A		
Test Items	Specification	Test Result	Test Method
Sensory Requirement			
Character	It should be light brown yellow to brown fine powder, with special odor and taste, without obvious visible impurities.	Conforms	Organoleptic
Identification			
TLC	Have to comply	Conforms	Ch.P<0502 >
Fingerprint	Have to comply	Conforms	Ch.P<0512>
HPLC	Kaempferol/Quercetin 0.8-1.2	1.00	Ch.P<0512>
HPLC	Isorhamnetin/Quercetin NLT 0.15	0.23	Ch.P<0512>
Assay			
Total Flavonoids, %(Quercetin+Kaempferol +Isorhamnetin)	NLT 24.0 (Calculated as flavonol glycosides)	26.80 (12.43+11.35+3.02)	Ch.P<0512 >
Terpene lactones, %	NLT 6.0	7.39	Ch.P<0512 >
Bilobalides	2.6-5.8	3.06	Ch.P<0512 >
Ginkgolides A+B+C	2.8-6.2	4.33 (1.79+0.97+1.57)	Ch.P<0512 >
Quality Data			
Loss on drying, %	NMT 5.0	3.30	Ch.P<0831>
Ash, %	NMT 5.0	0.46	Ch.P<2302>
Particle size(80 mesh), %	NLT 95.0	99.88	Ch.P<0982>
Bulk density, g/mL	0.46-0.65	0.53	Enterprise method
Free quercetin, %	NMT 0.2	0.05	Ch.P<0512 >
Ginkgo acids, ppm	NMT 5.0	0.30	Ch.P<0512 >
Rutin, %	NMT 4.0	2.30	Ch.P<0512 >
Heavy Metal			
Heavy Metals, ppm	NMT 10	Conforms	Ch.P<0821>
Pb, ppm	NMT 1.0	Conforms	Ch.P<2321>
As, ppm	NMT 1.0	Conforms	Ch.P<2321>
Hg, ppm	NMT 1.0	Conforms	Ch.P<2321>
Cd, ppm	NMT 1.0	Conforms	Ch.P<2321>
Control Items			
Pesticide residues	USP<561>	Conforms	GC-MS&LC-MS
Solvent residue	USP<467>	Conforms	GC
Microbial Limits			
TABC, cfu/g	NMT 1000	< 10	Ch.P<1105>
TMYC, cfu/g	NMT 100	10	Ch.P<1105>
E. Coli, /10g	Absent	ND	Ch.P<1106>
Salmonella, /10g	Absent	ND	Ch.P<1106>
Conclusion: The test results conform with the manufacture's standard.			
Storage: Keep it sealed in cool and dry place, guard against damp.			

Reporter: Liu Ying

Checker: Wen Yuqin

Approved: Guan Lanfang

Our Advantages

- 1) Inventory in **local and USA stock**, with shorter lead time;
- 2) Super **water-soluble** GBE is available, the solution is transparent with good color;
- 3) **Organic** GBE is available, with traceability certificate;
- 4) We can share our identification method for adulterations in GBE with you.

[Learn more](#)



Herb Green Health
禾 绿 康 健

Herb Green Health Biotech

www.herealth.com

Email: herealth@taiyi-nb.com